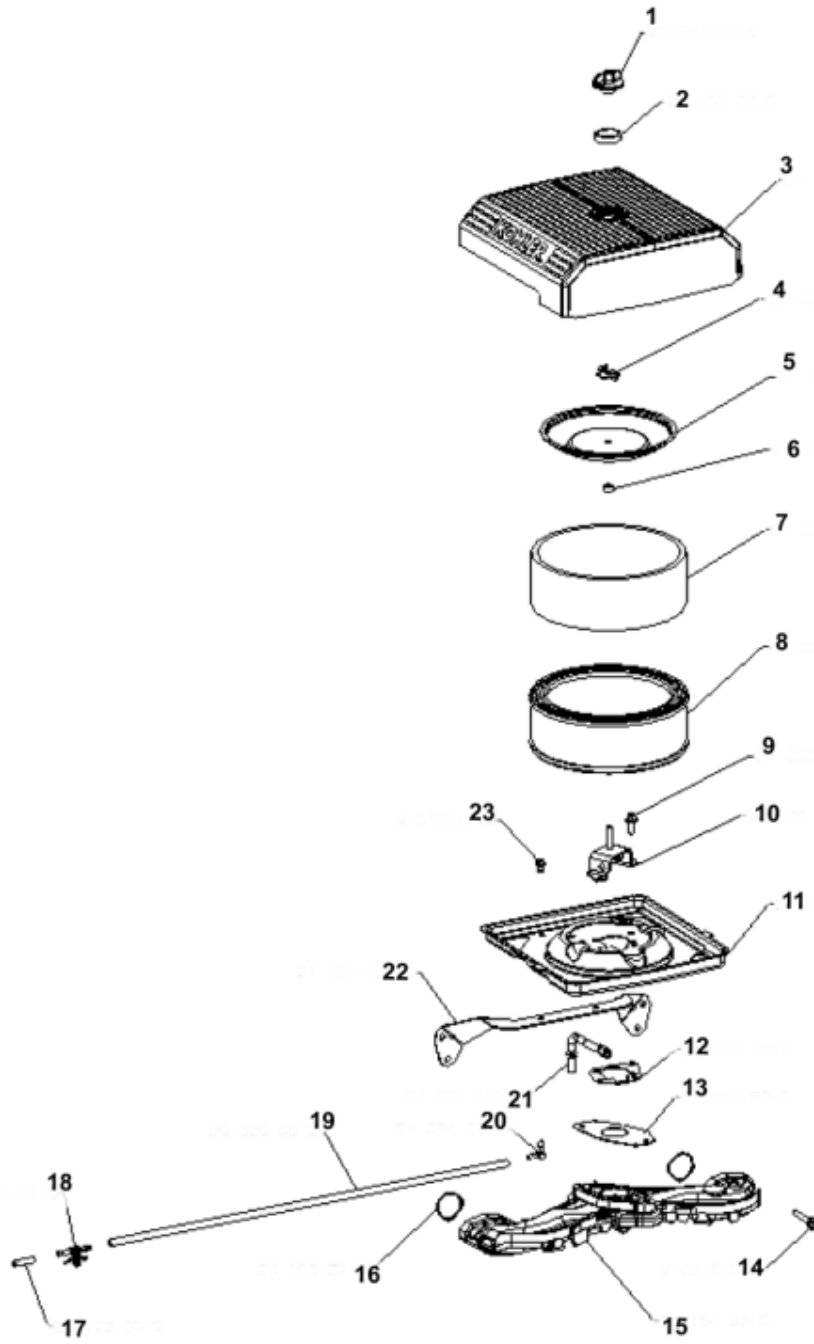


KOHLER.ENGINES

KOHLER Command PRO®

CH620S – 18 HP

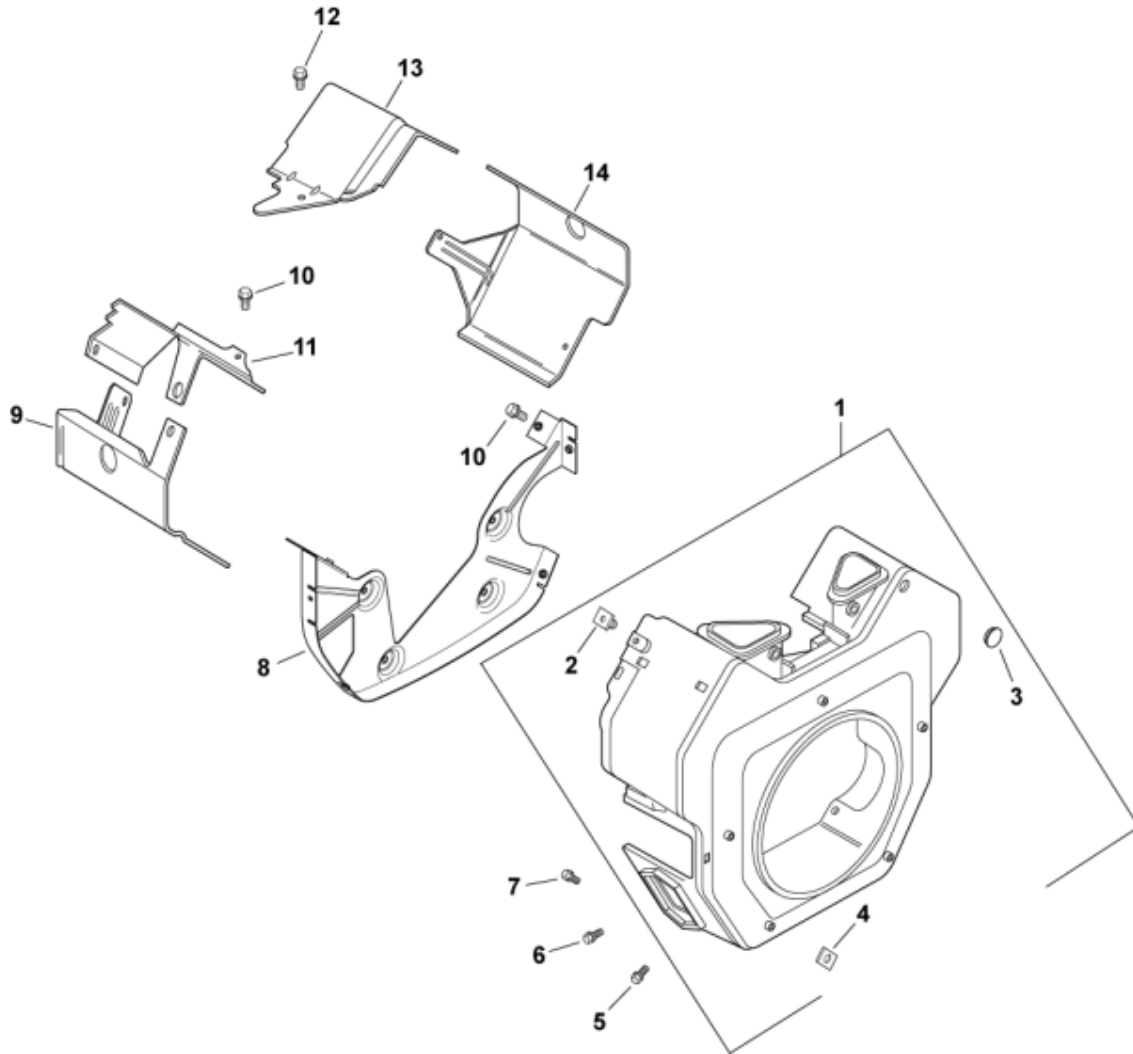




Air IntakeGroup 10-24-291

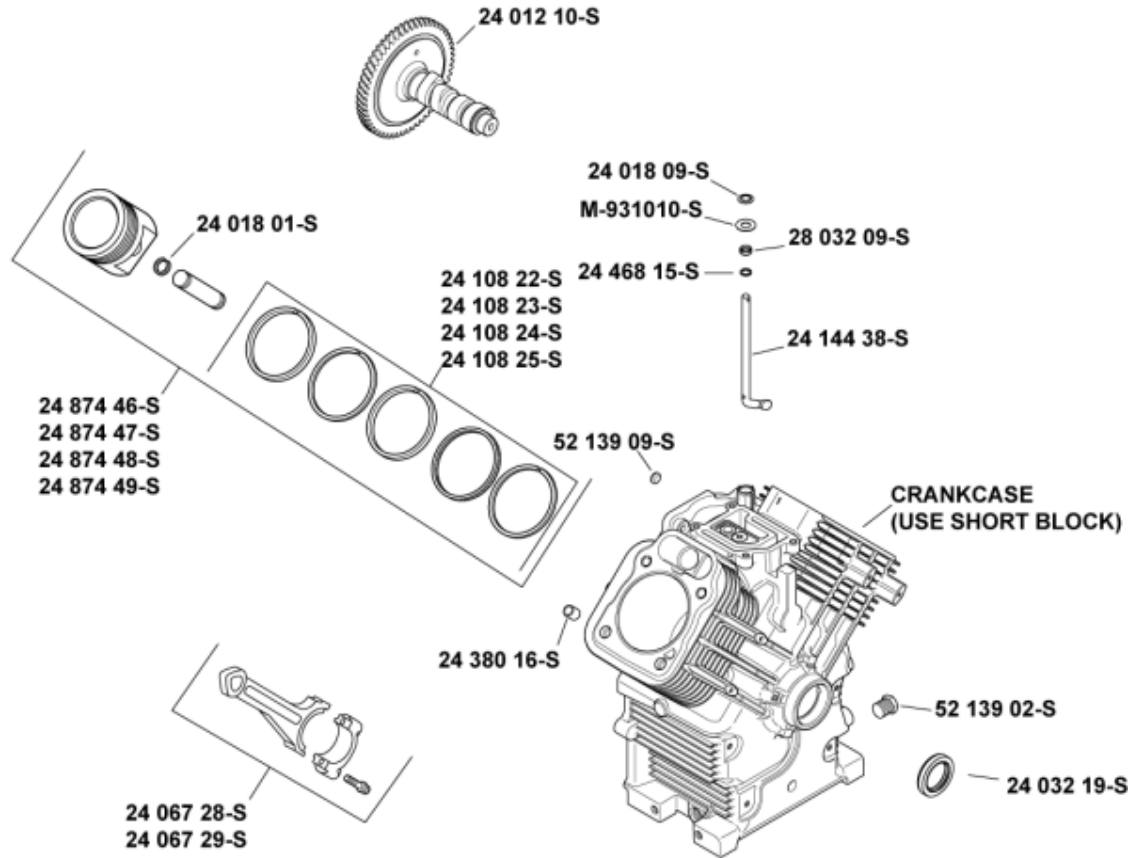
Ref #	Part	Description	Qty
1	25 341 04-S	KNOB, COVER	1
2	24 153 20-S	O-RING	1
3	24 096 26-S	A/C COVER	1
4	12 100 01-S	NUT, WING	1
5	24 096 01-S	COVER, INNER AIR CLEANER	1
6	24 032 03-S	SEAL, INNER AIR CLEANER	1
7	24 083 02-S	ELEMENT, PRECLEANER (LOW)	1
8	47 083 03-S	ELEMENT, AIR CLEANER	1
9	24 086 53-S	SCREW, FLG THD FRM M6X1.0X16	3
10	24 126 206-S	BRACKET, AIR CLEANER	1
11	24 094 84-S	KIT, AIR CLEANER BASE	1
12	24 041 06-S	GASKET, AIR CLEANER BASE	1
13	24 041 53-S	GASKET, CARBURETOR	1
14	M-651040-S	SCREW, FLG M6X1.0X40	4
15	24 164 93-S	KIT, INTAKE MANIFOLD	1
16	24 153 27-S	O-RING, INTAKE PORT	2
17	25 173 33-S	CAP, MASKING	1
18	25 155 51-S	CONNECTOR, EVAPORATIVE	1
19	25 326 08-S	HOSE, EVAPORATIVE 20"	1
20	24 294 27-S	CONNECTOR, EVAPORATIVE HOSE	1
21	24 326 116-S	HOSE, EVAPORATIVE-USE 24 326 131-S	1
22	24 126 130-S	BRACKET, AIR CLEANER BASE	1
23	M-545010-S	SCREW, FLG THD FRM M5X.8X10	2
	54 755 01-S	KIT, KNOB W/SEAL (INCLUDES 1,2 24 041 27-S)	1

BlowerHousingGroup 6-24-1



BlowerHousingGroup 6-24-1

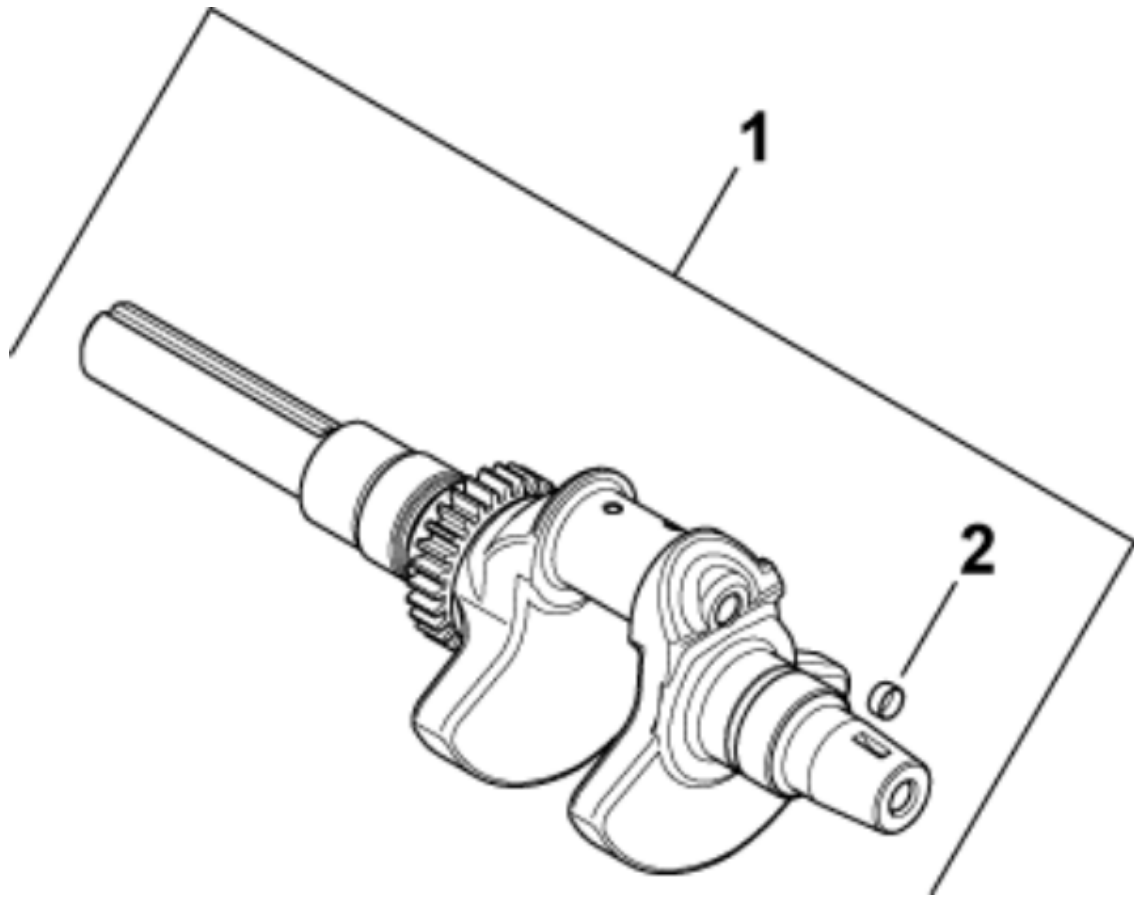
Ref #	Part	Description	Qty
1	24 027 175-S	KIT, BLWR HOUSING ASSY (includes 2-4, 41 037 10-S)	1
2	24 100 02-S	NUT, PLASTIC	2
3	25 139 16-S	PLUG, BUTTON 9/16	1
4	24 100 01-S	NUT, PLASTIC (KM)-USE 25 100 37-S	3
5	M-561016-S	SCREW - USE M-545016-S	1
6	M-545016-S	SCREW, FLG THD FRM M5X0.8X16-(#25086426S)	3
7	M-545020-S	SCREW, FLG THD FRM M5X.8X20 USE 25 086 399-S	4
8	24 146 55-S	PLATE, BACKING-USE 24 146 59-S (includes 5)	1
9	24 063 88-S	KIT, CYL BAFFEL #2 SIDE	1
10	M-645016-S	SCREW, FLG THD FRM M6X1.0X16-(#25086397S)	6
11	24 063 70-S	BAFFLE, VALLEY #2 SIDE-USE 24 063 94-S	1
12	M-545010-S	SCREW, FLG THD FRM M5X.8X10	2
13	24 063 59-S	BAFFLE, VALLEY (CH)-USE 24 063 93-S	1
14	24 063 85-S	KIT, CYL BAFFEL #1 SIDE	1
	25 154 11-S	CLIP, REPAIR (SPEED NUT) NOT ILLUSTRATED	1
	41 037 10-S	NAMEPLATE, SERVICE NOT ILLUSTRATED	1

CRANKCASE

CrankcaseGroup 2-24-267

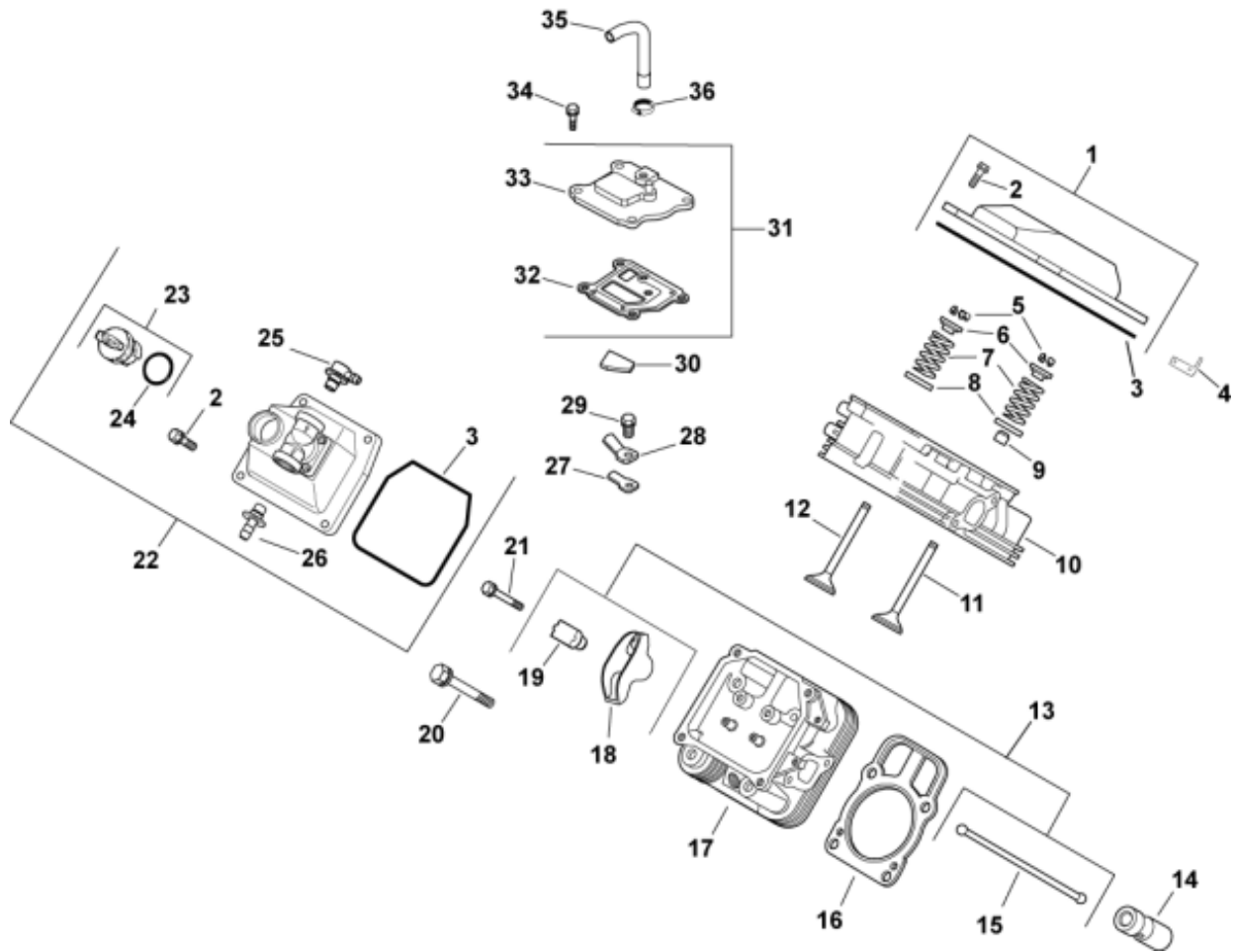
Ref #	Part	Description	Qty
		CRANKCASE (USE SHORT BLOCK)	1
	52 139 02-S	PLUG, HD PIPE 3/8"	2
	24 032 19-S	OIL SEAL (HELIX LIP)	1
	24 380 16-S	PIN, LOCATING	6
	24 067 28-S	ROD, ASSY CONNECTING (STD)-(#2406730S)	2
	24 874 46-S	KIT,PISTON ASSY W/RING(STD)77MM	2
	24 018 01-S	RETAINER, PISTON PIN	4
	24 108 22-S	RING SET (STD)	1
	24 108 23-S	RING SET (.08)	1
	24 108 24-S	RING SET (.25)	1
	24 108 25-S	RING SET (.50)	1
	24 012 10-S	KIT, CAMSHAFT (includes 25 357 14-S)	1
	24 018 09-S	RETAINER, RING	1
	M-931010-S	WASHER, FLAT 9 MM	1
	28 032 09-S	SEAL, GOVERNOR CROSS SHAFT	1
	24 468 15-S	WASHER, FLAT 11/32"	1
	24 144 38-S	SHAFT, GOVERNOR CROSS	1
	52 139 09-S	PLUG, CUP	1
	24 067 29-S	ROD, ASSY CONNECTING-USE 24 067 31-S	2
	24 874 47-S	KIT,PISTON ASSY W/RING SET(.08)77MM	2
	24 874 48-S	KIT,PISTON ASSY W/RING SET(.25)77MM	2
	24 874 49-S	KIT,PISTON ASSY W/RING SET(.5)77MM	2
	25 357 14-S	LUBRICANT, CAMSHAFT NOT ILLUSTRATED	1

CrankshaftGroup 1-24-1



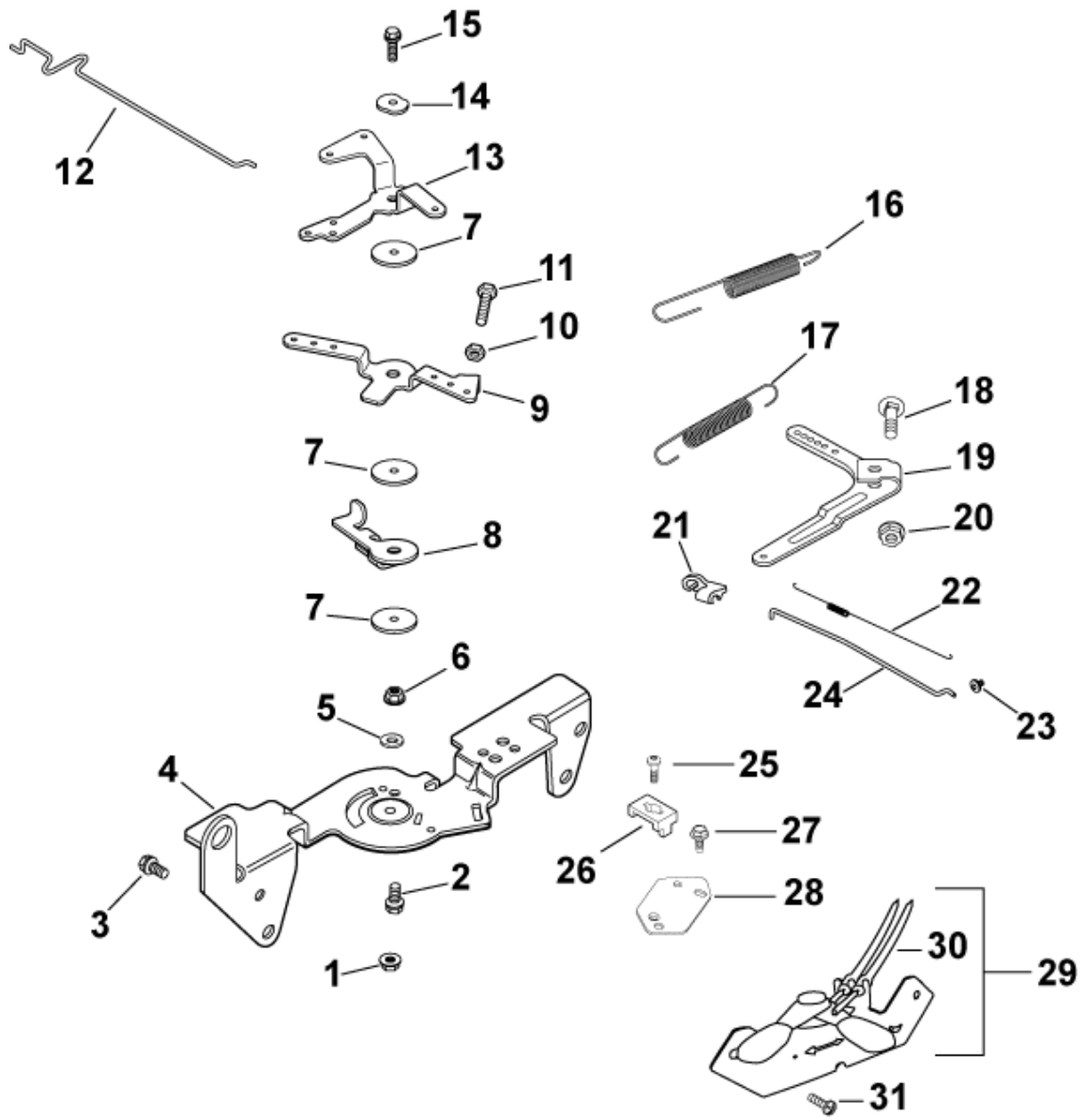
CrankshaftGroup 1-24-1

Ref #	Part	Description	Qty
1	24 014 02-S	CRANKSHAFT ASSY (KM)-USE 24 014 345-S <i>(includes 2)</i>	1
2	52 139 09-S	PLUG, CUP	1



Cylinder Head/BreatherGroup 4-24-51

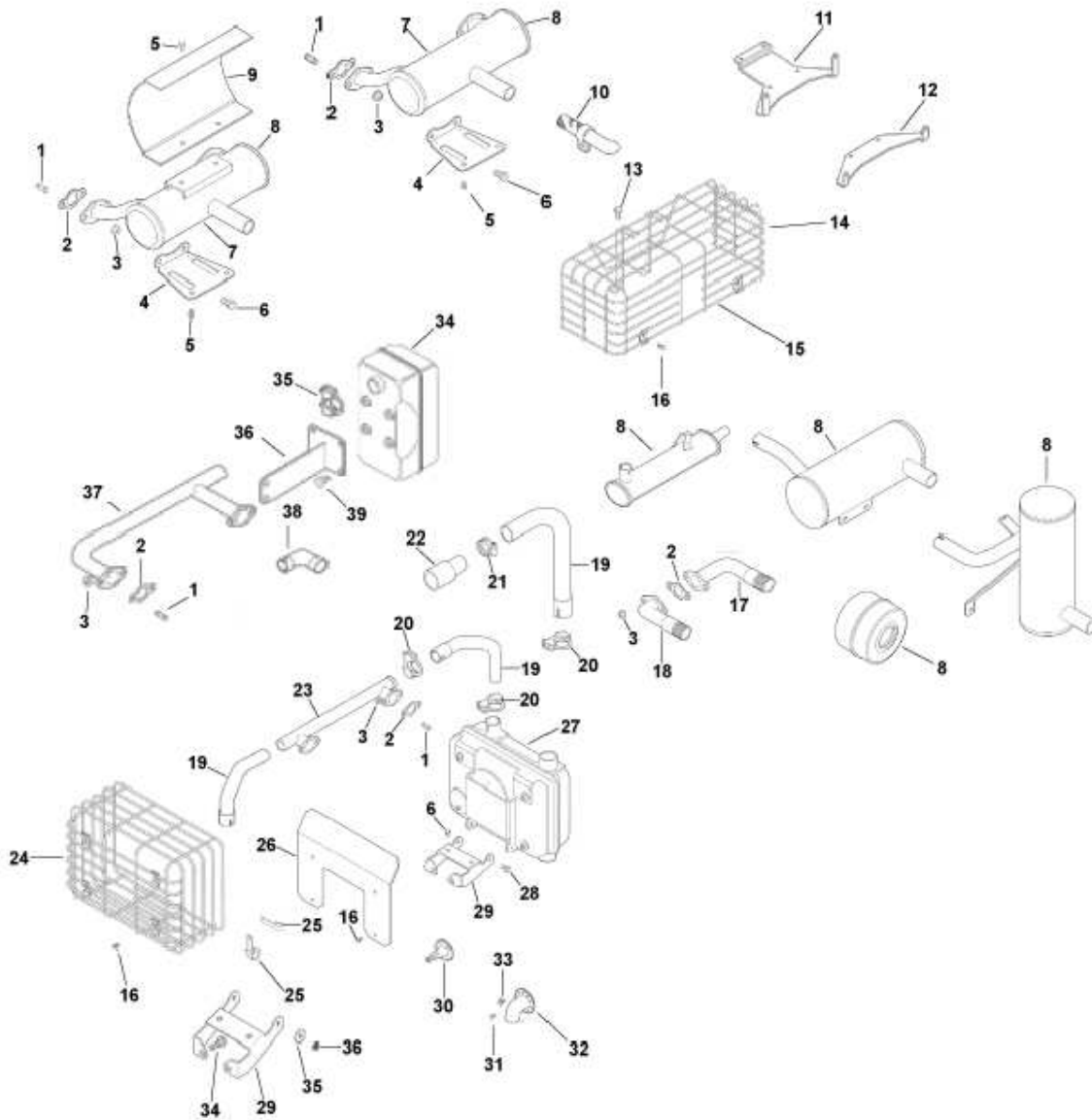
Ref #	Part	Description	Qty
1	24 755 141-S	KIT, VALVE COVER-PLAIN (includes 2,3)	1
2	M-651030-S	SCREW, FLG M6X1.0X30	8
3	24 153 28-S	O-RING (YELLOW) -USE 24 153 30-S	1
4	24 445 01-S	STRAP, LIFTING-USE 25 445 03-S	1
5	12 755 03-S	KIT, RETAINER	8
6	12 173 01-S	RETAINER, VALVE SPRING	4
7	24 089 02-S	SPRING, VALVE	4
8	235011-S	RETAINER	4
9	66 032 05-S	SEAL, VALVE STEM	2
10	24 318 68-S	HEAD, ASSEMBLY CYLINDER #1	1
11	24 017 01-S	VALVE, INTAKE	2
	24 017 02-S	VALVE, INTAKE (.25)	2
12	24 016 01-S	VALVE, EXHAUST (STELLITE)	2
	24 016 02-S	VALVE, EXHAUST (.25)	2
13	24 755 66-S	KIT, VALVE TRAIN (includes 15,18,19)	1
14	25 351 04-S	HYDRAULIC VALVE LIFTER-USE 25 351 10-S	4
15	24 411 05-S	ROD, PUSH	4
16	24 841 01-S	KIT, CYL HEAD GASKET (C17-22) (includes 20)	2
17	24 318 71-S	HEAD, ASSEMBLY CYLINDER #2	1
18	25 186 01-S	ARM, ROCKER	4
19	24 599 01-S	PIVOT, ROCKER ARM	4
20	12 086 16-S	SCREW, HEX FLANGE	8
21	66 086 07-S	SCREW, ROCKER ARM PIVOT-USE M-640034-S	4
22	24 559 10-S	KIT, VALVE COVER-FUEL PUMP (includes 2,23-30, 25 141 06-S)	1
23	24 227 02-S	CAP ASSY, OIL FILL (YELLOW) (includes 24)	1
24	24 153 09-S	O-RING-USE 24 153 32-S	2
25	25 294 11-S	KIT, 90 DEG. FITTING	2
26	25 294 09-S	KIT, STRAIGHT FITTING	1
27	24 402 03-S	REED, BREATHER	1
28	66 018 04-S	RETAINER, REED	1
29	M-545010-S	SCREW, FLG THD FRM M5X.8X10	1
30	24 050 01-S	FILTER, BREATHER-USE 24 050 11-S	1
31	24 033 01-S	KIT, BREATHER ASSY (includes 32,33)	1
32	24 041 51-S	GASKET, BREATHER-USE 24 041 67-S	1
33	24 096 86-S	COVER, BREATHER -USE 24 033 01-S	1
34	M-645020-S	SCREW, FLG THD FRM M6X1.0X20-(#25086396S)	4
35	24 326 76-S	HOSE, BREATHER-USE 24 326 89-S	1
36	25 237 14-S	CLAMP, HOSE (KM)-USE 25 237 31-S	1
	24 755 147-S	KIT, CYL HEAD HARDWARE NOT ILLUSTRATED (includes 5-9,11,12,15,18,19,21)	2
	25 141 06-S	TOOL, INSTALLATION (SNAP RING) NOT ILLUSTRATED	1
	24 353 12-S	LINE, FUEL 11" NOT ILLUSTRATED	1



EngineControlsGroup 9-24-137

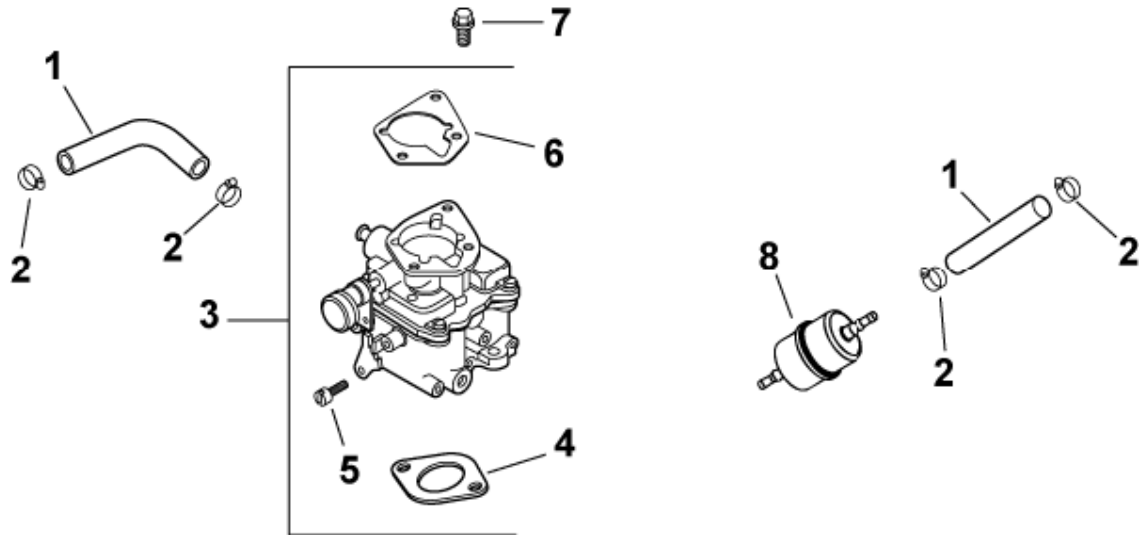
Ref #	Part	Description	Qty
1	M-541050-S	NUT, FLG M5X.8	1
2	M-545016-S	SCREW,FLG THD FRM M5X0.8X16-(#25086426S)	1
3	M-645016-S	SCREW,FLG THD FRM M6X1.0X16-(#25086397S)	4
4	24 126 56-S	BRACKET, CONTROL-USE 24 126 176-S	1
5	X-20-1-S	WASHER, SPRING LOCK 1/4"	1
6	M-547050-S	NUT, LOCK M5X.8	1
7	24 468 01-S	WASHER, FLAT 5.5 MM	3
8	24 090 07-S	LEVER, THROTTLE ACTUATOR-USE 24 090 65-S	1
9	24 090 13-S	LEVER, THROTTLE CONTROL	1
10	M-446030-S	NUT, M4X0.7	1
11	M-401030-S	SCREW, CAP M4X.7X30	1
12	24 079 21-S	LINKAGE, CHOKE	1
13	24 090 05-S	LEVER, CHOKE	1
14	41 468 03-S	WASHER, SPRING 1/4"	1
15	M-545020-S	SCREW, FLG THD FRM M5X.8X20 USE 25 086 399-S	1
16	24 089 51-S	SPRING, THROTTLE LIMITER	1
17	24 089 49-S	SPRING, GOVERNOR (ORANGE)	1
18	24 211 03-S	BOLT, RD HD SQ NECK M6X1.0X25	1
19	24 090 51-S	LEVER, GOVERNOR-USE 24 090 57-S	1
20	M-641060-S	NUT, FLG M6X1.0	1
21	25 158 11-S	BUSHING, THROTTLE LINKAGE	1
22	24 089 01-S	SPRING, LINKAGE	1
23	25 158 08-S	BUSHING, LINKAGE RETAINING	1
24	24 079 01-S	LINKAGE, THROTTLE	1
25	24 086 43-S	SCREW, LBD THD FRM M5x0.8x16	1
26	12 237 01-S	CLAMP, CABLE	1
27	M-545010-S	SCREW, FLG THD FRM M5X.8X10	2
28	24 126 99-S	BRACKET, CABLE SUPPORT	1
29	24 225 02-S	CABLE ASSY, CONTROL	1
30	24 159 03-S	KIT, CABLE THROTTLE	1
31	24 086 06-S	SCREW, PHL HD 11-16X3/4"	2
	24 113 92-S	DECAL, CONTROL PANEL NOT ILLUSTRATED	1

EXHAUST
CH18, CH20, CH22, CH25, CH620, CH640, CH670, CH680, CH730, CH740, CH750



ILLUSTRATIONS ARE REPRESENTATIVE AND ARE NOT INTENDED TO SHOW ALL DETAILS FOR EACH COMPONENT

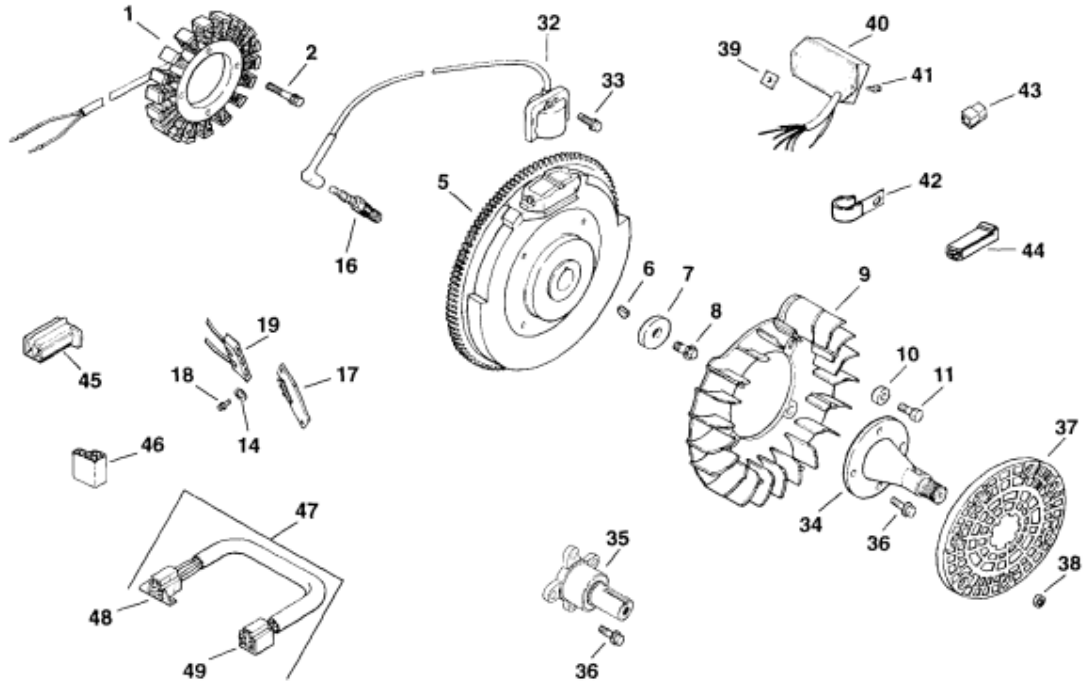
Ref #	Part	Description	Qty
1	25 072 24-S	STUD	4



Fuel SystemGroup 8-24-443

Ref #	Part	Description	Qty
1	25 111 34-S	HOSE,LW PERM.FUEL 24.00"-USE 25 111 81-S	2
2	25 237 14-S	CLAMP, HOSE (KM)-USE 25 237 31-S	4
3	24 853 43-S	KIT, CARBURETOR W/GASKETS (includes 4-6)	1
4	24 041 17-S	GASKET, CARBURETOR	1
5	24 086 05-S	SCREW, THROTTLE STOP	1
6	24 041 06-S	GASKET, AIR CLEANER BASE	1
7	M-651025-S	SCREW - USE 25 086 124-S	2
8	24 050 10-S	FUEL FILTER (9-12 MICRON)-USE 24 050 13-S	1
	24 755 125-S	KIT, HIGH ALTITUDE (4,000 - 8,000 FT) NOT ILLUSTRATED	1
	24 757 01-S	KIT, SOLENOID NOT ILLUSTRATED	1
	24 757 02-S	KIT, REPAIR FLOAT NOT ILLUSTRATED	1
	24 757 03-S	KIT, REPAIR CARBURETOR NOT ILLUSTRATED	1
	24 757 07-S	KIT, REPAIR CHOKE NOT ILLUSTRATED	1
	24 518 24-S	LEAD, GROUND NOT ILLUSTRATED	1

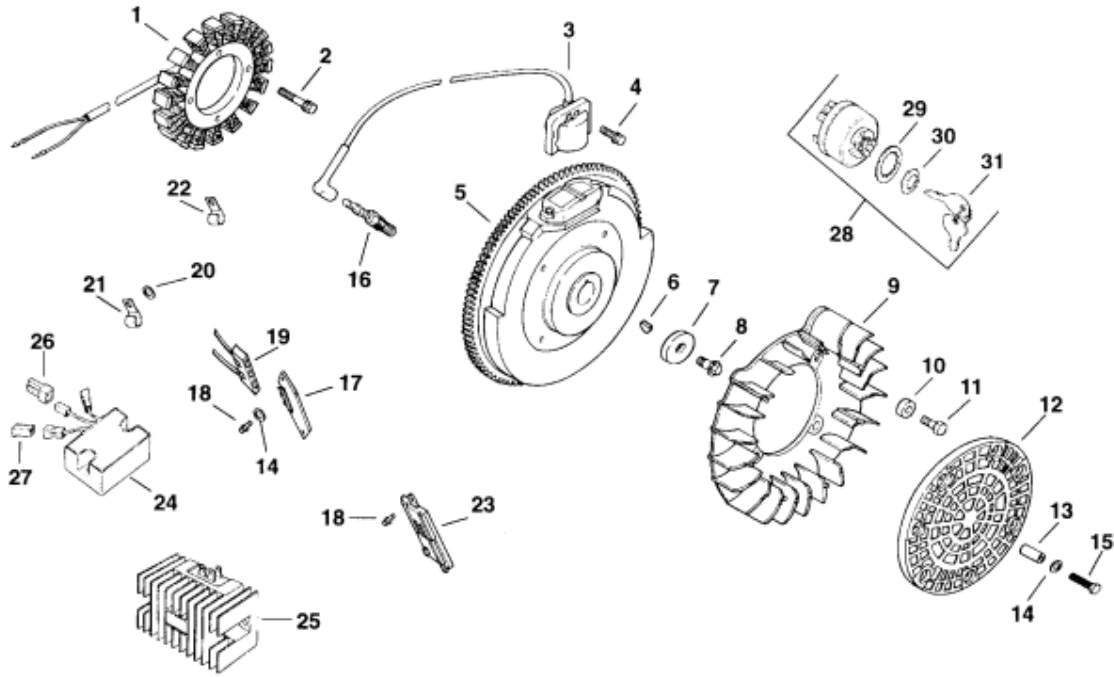
Ignition/ChargingGroup (Cont.) 5-24-46



Ignition/ChargingGroup (Cont.) 5-24-46

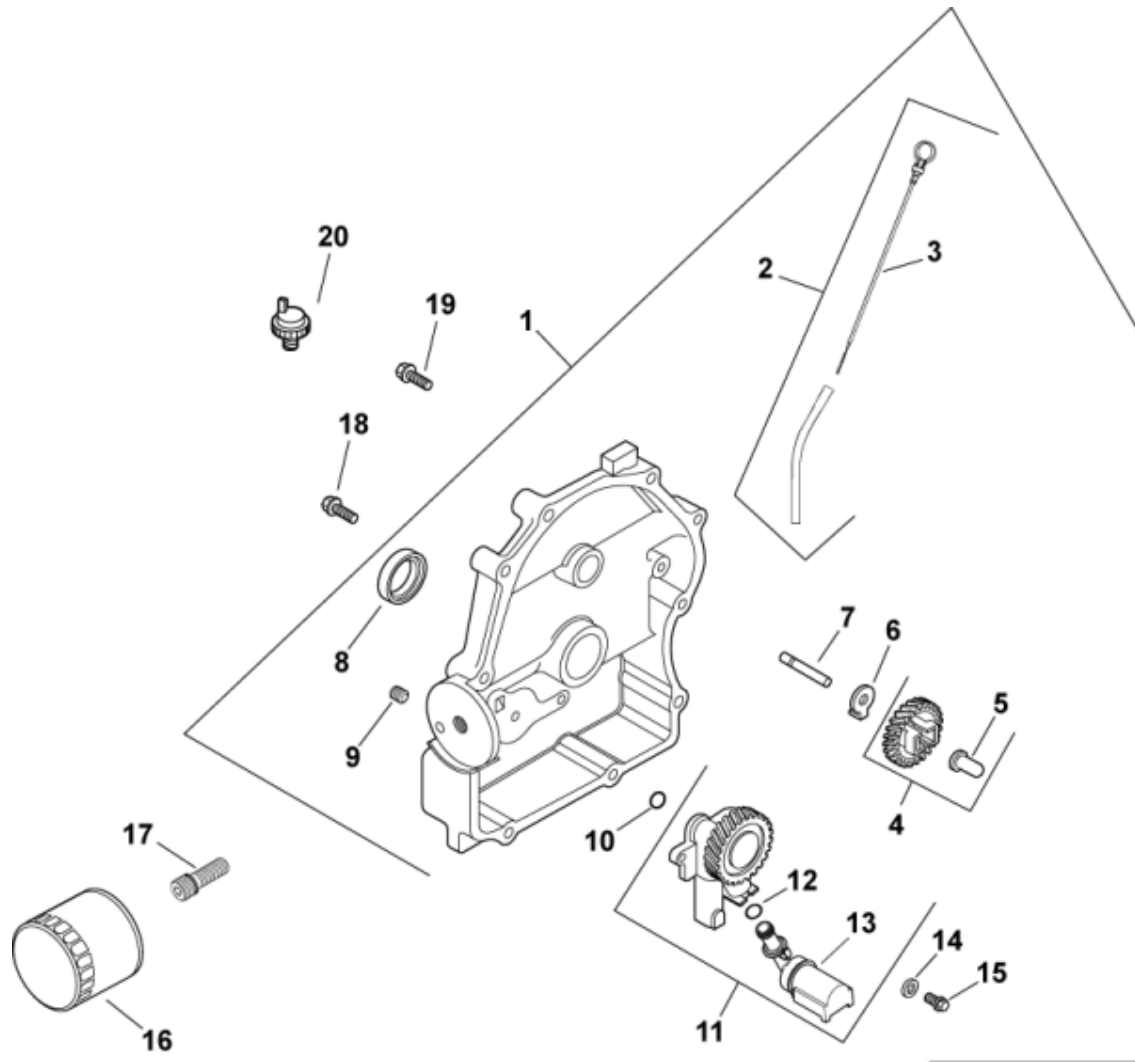
Ref #	Part	Description	Qty
1	24 085 01	Stator (15 amp)	1
2	M-0548025	Screw, hex. cap M5x0.8x25	2
5	24 025 01-S	Flywheel	1
6	X-42-15-S	Key	1
7	12 468 03-S	Washer, plain 3/8"	1
8	12 086 14-S	Screw, hex. flange M10x1.5x76	1
9	24 157 01-S	Fan	1
10	12 112 01	Spacer, fan	4
11	M-0639016	Screw, hex. flange M6x1.0x16	4
14	X-25-92-S	Washer, plain 1/2"	2
16	12 132 02-S	Sparkplug	2
17	25 403 03-S	Rectifier-regulator (15 amp)	1
18	24 086 18-S	Screw, hex. cap M10x1.5x61	2
19	236602-S	Connector (3 contact)	1
38	24 018 03-S	Retainer	3
43	15 155 01-S	Connector	1
44	277563-S	Connector	1
	24 176 21	Harness, wiring	1
	24 518 04	Lead, green, rectifier-regulator 4" - 18 gauge - terminals: 2 insulated grip barrel eyelets	1
	24 518 06-S	Lead, black 6" - 14 gauge - terminals: 1 uninsulated push on tab, 1 insulated grip barrel eyelet	1

Ignition/ChargingGroup 5-24-46



Ignition/ChargingGroup 5-24-46

Ref #	Part	Description	Qty
1	24 085 01	Stator (15 amp)	1
2	M-0548025	Screw, hex. cap M5x0.8x25	2
3	24 584 01-S	Module, ignition	2
4	SM-0545020	Screw, hex. flange M5x0.8x20	4
5	24 025 01-S	Flywheel	1
6	X-42-15-S	Key	1
7	12 468 03-S	Washer, plain 3/8"	1
8	12 086 14-S	Screw, hex. flange M10x1.5x76	1
9	24 157 01-S	Fan	1
10	12 112 01	Spacer, fan	4
11	M-0639016	Screw, hex. flange M6x1.0x16	4
12	24 162 03-S	Screen, grass	1
14	X-25-92-S	Washer, plain 1/2"	2
16	12 132 02-S	Sparkplug	2
17	25 403 03-S	Rectifier-regulator (15 amp)	1
18	24 086 18-S	Screw, hex. cap M10x1.5x61	2
19	236602-S	Connector (3 contact)	1
20	X-25-63-S	Washer, plain 1/4"	2
21	235173-S	Clip	1
22	48 154 02-S	Clip	1
28	25 099 04-S	Switch, key Includes 29-31	1
29	48 468 02-S	Washer, I.T.	1
30	48 100 01-S	Nut, hex. 9/16-24	1
31	48 340 01	Key (Set of 2)	1
	24 176 21	Harness, wiring	1
	24 518 04	Lead, green, rectifier-regulator 4" - 18 gauge - terminals: 2 insulated grip barrel eyelets	1
	24 518 06-S	Lead, black 6" - 14 gauge - terminals: 1 uninsulated push on tab, 1 insulated grip barrel eyelet	1

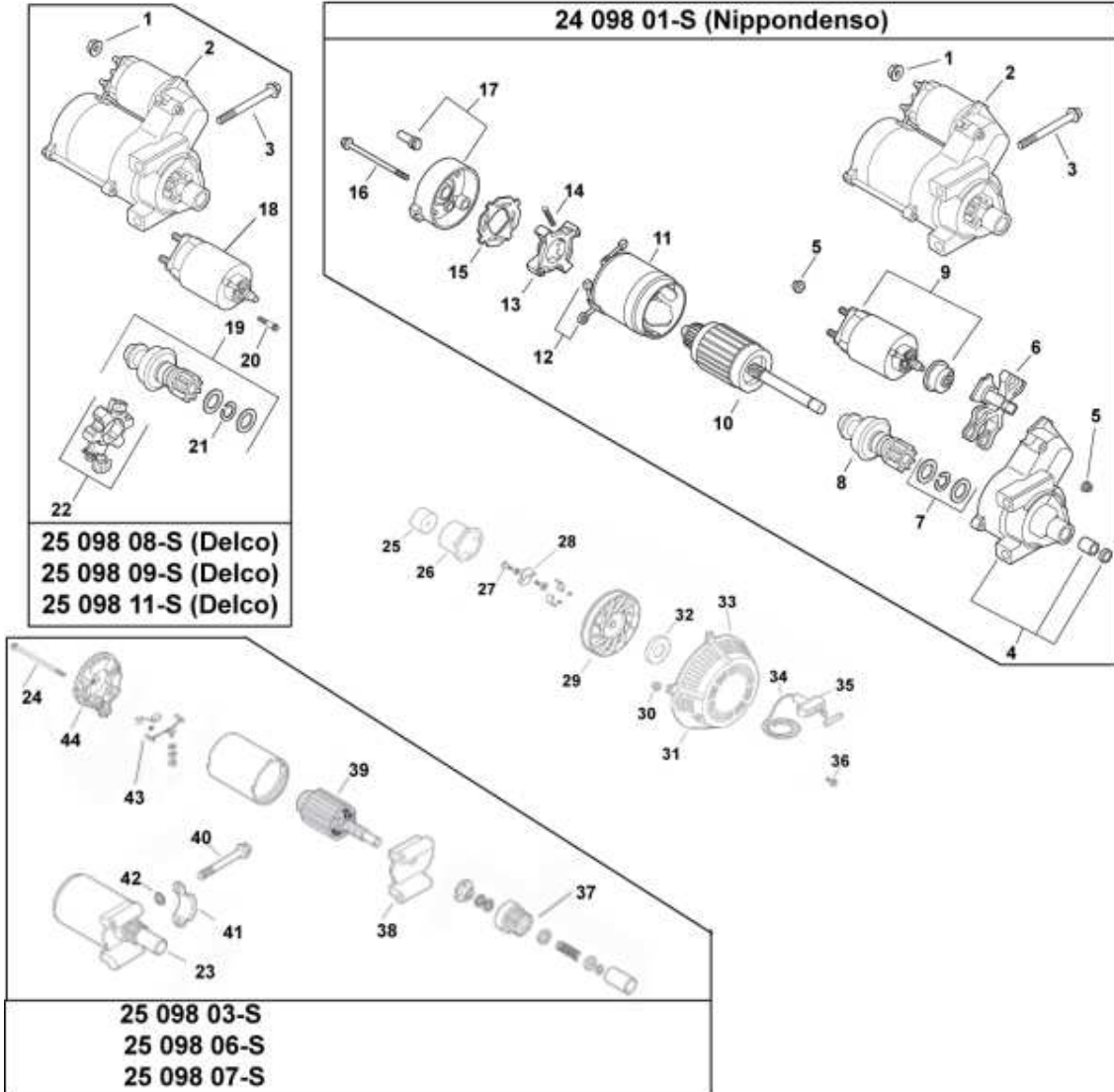


LubricationGroup 3-24-124

Ref #	Part	Description	Qty
1	24 009 82-S	CLOSURE PLATE USE 24 009 150-S (includes 2-15)	1
2	24 755 121-S	KIT, DIPSTICK/DIPSTICK TUBES (includes 3)	1
3	24 038 10-S	DIPSTICK	1
4	24 043 12-S	KIT, GOVERNOR GEAR W/PIN	1
5	12 380 01-S	PIN, GOVERNOR REGULATING	1
6	24 448 02-S	TAB, LOCKING	1
7	12 144 02-S	SHAFT, GOVERNOR GEAR	1
8	52 032 08-S	OIL SEAL (KM)-USE 25 032 06-S	1
9	25 139 60-S	PLUG, CTSK PIPE 1/8"	1
10	24 153 08-S	O-RING	1
11	24 393 51-S	PUMP ASSY, OIL-USE 24 393 53-S (includes 12,13)	1
12	24 153 01-S	O-RING, OIL PICK-UP	1
13	24 381 04-S	PICK-UP, OIL	1
14	M-631005-S	WASHER, FLAT 6 MM	2
15	M-645025-S	SCREW, FLG THD FRM M6X1.0X25	2
16	12 050 01-S	OIL FILTER	1
17	24 136 01-S	NIPPLE, OIL FILTER	1
18	24 086 16-S	SCREW, HEX FLANGE -USE 24 086 17-S	9
19	24 086 17-S	SCREW, FLG M8X1.25X45	1
20	25 099 24-S	SWITCH, PRESSURE (CLOSED)-USE 25 099 27-S	1

STARTING GROUP
CH18,CH20,CH22,CH23,CH25,CH620,CH640,CH670,CH680,CH730,CH740,CH750

Service starter components according to the part number printed on the starter. Starter components are NOT interchangeable.



ILLUSTRATIONS ARE REPRESENTATIVE AND ARE NOT INTENDED TO SHOW ALL DETAILS FOR EACH COMPONENT

Ref #	Part	Description	Qty
1	M-841080-S	NUT, FLG M8X1.25	1
2	25 098 11-S	ELECTRIC STARTER - SOLENOID SHIFT	1
3	M-851080-S	SCREW, FLG M8X1.25X80	2
18	25 435 06-S	KIT, SOLENOID	1
19	25 755 33-S	KIT, STARTER PINION	1
20	25 086 113-S	SCREW, EXTERNAL TORX HEAD	3
21	25 141 05-S	RING, RETAINING	1
22	25 221 01-S	KIT, BRUSH HOLDER	1